

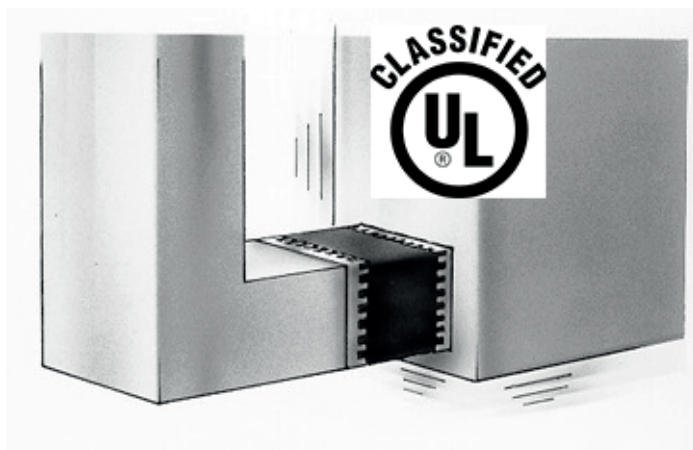


FLEXIBLE DUCT CONNECTORS

PRODUCT CATALOG

1 PERFECT SOLUTION FOR NOISES AND VIBRATIONS

All air duct installations for heating or ventilation are attached to mechanical equipment containing a fan or blower. This equipment causes vibrations and noises which are transmitted in the metal ducts throughout the installation.



In order to isolate vibrations and noises caused by air handling units, fans and other equipments, it is highly recommended to install an airtight flexible joint between the outlet of the device and the airduct. This joint, consisting of a fabric which is attached to a sheet of metal on both sides is called a « Flexible Duct Connector».

It is necessary to select an airtight and flexible cloth with good weathering qualities and which can withstand temperatures inside and outside the duct. CLIM flexible connectors are perfect for this job.

2 FLEXIBLE DUCT CONNECTORS

Clim offers two types of seam locks of metal-to-fabrics. Both gives a great strength, nothing comparable to classical singlefold methods.



LOC4 for residential or light commercial applications



LOC3 for industrial or commercial applications

- All CLIM fabrics flexible duct connectors meet the British specifications for sheet metal ductwork DW/142 and DW/144.
 - All CLIM flexible duct connectors are manufactured in Europe (Belgium).
 - All CLIM flexible duct connectors are also available with 304 or 316 stainless steel on request.
 - All CLIM flexible duct connectors are manufactured with 24 or 28 ga. galvanized steel.
-

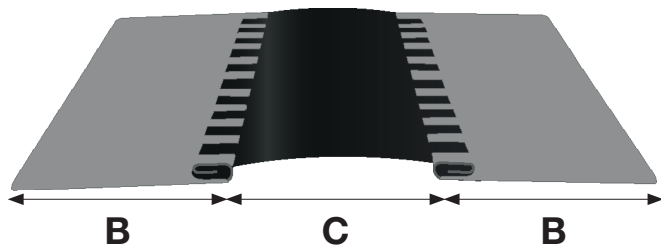
3 FABRICS

| TECHNICAL SPECIFICATION | | ROBG | NEO | SI | PTFE | ROX |
|-----------------------------------|----------|--|---|--|--|--|
| MATERIAL | COATING | PVC | Polychloroprene | Silicone | Polytetra-fluorethylene | PVC |
| | CLOTH | Polyester | Fiberglass | Fiberglass | Fiberglass | Polyester |
| COATING | | Both sides | Both sides | Both sides | On notched side | Both sides |
| WEIGHT | | 600 gr/sq m (18 oz/sq yd) | 720 gr/sq m (21 oz/sq yd) | 520 gr/sq m (15 oz/sq yd) | 540 gr/sq m (16 oz/sq yd) | 600 gr/sq m (18 oz/sq yd) |
| TENSILE STRENGTH | WRAP | >=250 daN/5cm | >=250 daN/5cm | >=250 daN/5cm | >=250 daN/5cm | >=250 daN/5cm |
| | WEFT | >=250 daN/5cm | >=250 daN/5cm | >=250 daN/5cm | >=250 daN/5cm | >=250 daN/5cm |
| TEAR STRENGTH | WRAP | >=22 daN | >=10 daN | >=10 daN | >=12 daN | >=22 daN |
| | WEFT | >=20 daN | >=15 daN | >=15 daN | >=10 daN | >=20 daN |
| COLOUR | | Black | Black | Grey | Golden brown | Grey |
| TEMPERATURE RANGE (CONTINUOUS) | | -20°C to +70°C (-4°F to 158°F) | -20°C to +100°C (-4°F to 212°F) | -40°C to +260°C (-40°F to 500°F) | -140°C to +260°C (-220°F to 500°F) | -20°C to +70°C (-4°F to 158°F) |
| RESISTANCE | ACIDS | Very good | Good | Good | Good | Very good |
| | OILS | Good | Poor | Poor | Good | Good |
| | SOLVENTS | Fair | Good | Good | Fair | Fair |
| | GREASES | Good | Poor | Poor | Good | Good |
| | OZON | Very good | Good | Very good | Good | Very good |
| | UV | Very good | Fair | Very good | Good | Very good |
| | ALOGEN | Very good | Poor | Poor | Good | Very good |
| CHARACTERISTICS | | <ul style="list-style-type: none"> - Excellent mechanical resistance - Excellent tear and tensile strength - All purpose - Flame retardant - Excellent water resistance | <ul style="list-style-type: none"> - Excellent high temperature resistance - «Hardly flammable» classified - Very good chemical resistance | <ul style="list-style-type: none"> - Excellent high temperature resistance - Very good low temperature resistance - Very low smoke emission - Very good chemical resistance - Excellent ozone and weathering resistance | <ul style="list-style-type: none"> - Excellent high temperature resistance - Black side 10⁵ Ohms (surface resistivity) - Very good chemical resistance | <ul style="list-style-type: none"> - Excellent mechanical resistance - Excellent tear and tensile strength - All purpose - Flame retardant - Excellent water resistance |
| STANDARDS | | UL classified - NFPA 701 | UL classified - NFPA 701 | UL tested - NFPA 701 | Not flammable according to DIN 4102 A2 | - |

- All CLIM fabrics are unaffected by mildew.
- All CLIM fabrics are designed to meet NFPA 90A (Installation of air conditioning and ventilating systems).
- All CLIM fabrics are designed to meet NFPA 90B (Warm air heating and air conditioning systems).
- All CLIM fabrics are airtight and waterproof.
- All CLIM fabrics meet American, British, French, German and other european standards.

4 FLEXIBLE DUCT CONNECTOR TYPE «LOC4»

0,4 mm (28 ga.) steel thickness (European standard)



A = thickness of steel : 0,4 mm (28 ga.)

B = steel width

C = fabric width

L = length of roll : 25 m (82 feet)

Others lengths on request



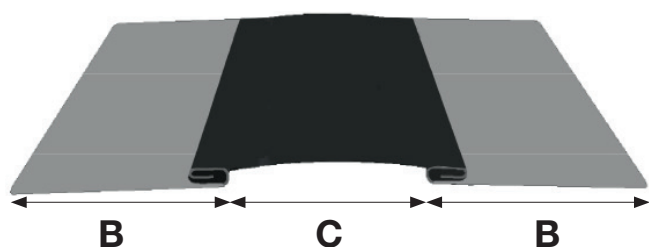
LOC4

| B = STEEL WIDTH | | C = FABRIC WIDTH | |
|-----------------|--------|------------------|-----------|
| 28 mm | 1-1/8" | 40 mm | 1-9/16" |
| | | 60 mm | 2-3/8" |
| | | 75 mm | 3" |
| | | 100 mm | 4" |
| 35 mm | 1-3/8" | 40 mm | 1-9/16" |
| | | 60 mm | 2-3/8" |
| | | 75 mm | 3" |
| | | 100 mm | 4" |
| 45 mm | 1-3/4" | 60 mm | 2-3/8" |
| | | 75 mm | 3" |
| | | 100 mm | 4" |
| | | 150 mm | 6" |
| 70 mm | 2-3/4" | 75 mm | 3" |
| | | 100 mm | 4" |
| | | 150 mm | 6" |

Bold sizes are standard and other sizes are available on request

5 FLEXIBLE DUCT CONNECTOR TYPE «LOC3»

24 ga. (0,6 mm) steel thickness (American standard)



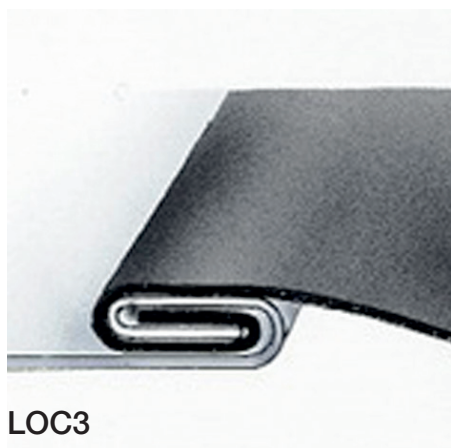
A = thickness of steel : 24 ga. (0,6 mm)

B = steel width

C = fabric width

L = length of roll : 100 feet (30,5 m)

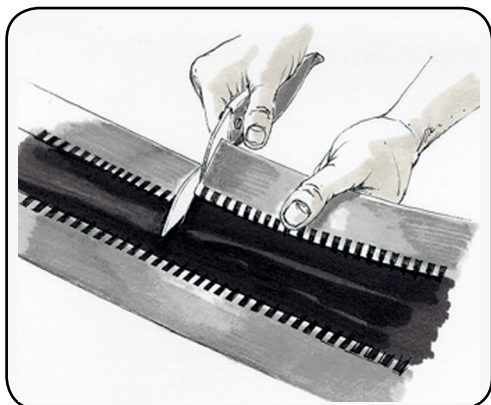
Others lengths on request



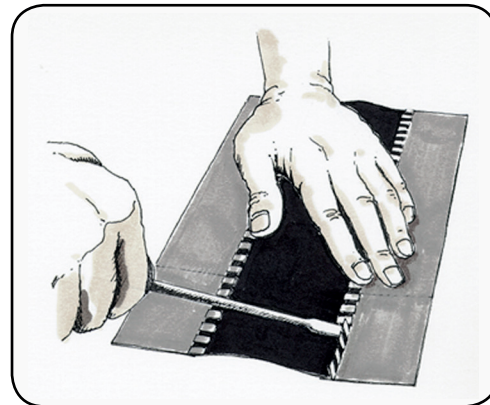
| B = STEEL WIDTH | | C = FABRIC WIDTH | |
|-----------------|--------|------------------|---------------|
| 2" | 50 mm | 3" | 75 mm |
| | | 4" | 100 mm |
| | | 6" | 150 mm |
| 3" | 75 mm | 3" | 75 mm |
| | | 4" | 100 mm |
| | | 6" | 150 mm |
| 4" | 100 mm | 4" | 100 mm |
| | | 6" | 150 mm |

Bold sizes are standard and other sizes are available on request

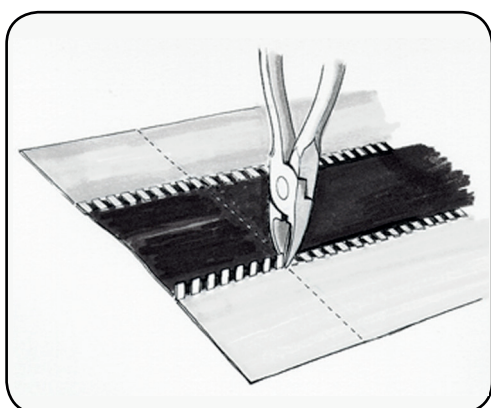
6 RECOMMENDED ASSEMBLY METHOD



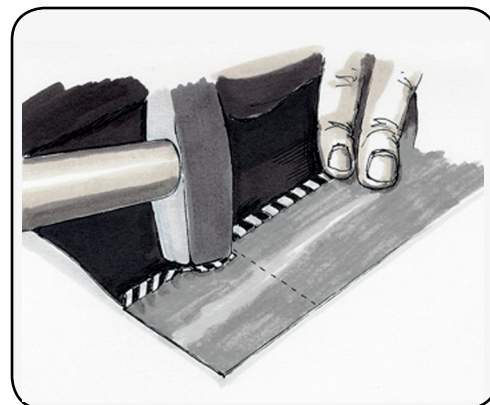
At a notch, cut a length equivalent to the perimeter required plus an overlap of 5 to 6 cm (2").



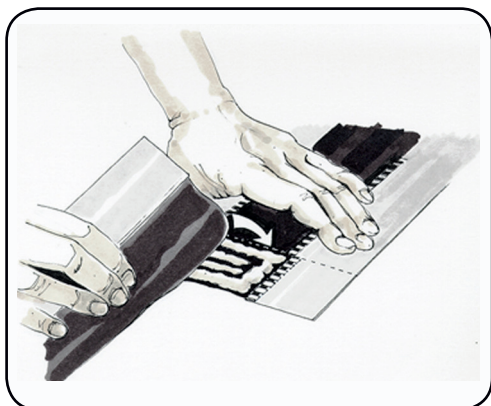
Lift the seam outwards at right angle.



Make a cut at the edge of the seam section.



Bend down the seam while ensuring that the cloth remains fastened.



Coat the cloth with the appropriate adhesive, or pad. Join both sides and press together.

Information contained herein is based on careful tests and experience. It reflects our knowledge and is for guidance purpose only. It is given in good faith and user should ensure that the product is fit for purpose before any application. The quoted values are average and should not be taken as maximum or minimum values for specific purposes. Manufacturer and distributor are not responsible for any non-recommended use or consequential damage.

The best international choice for duct and fixing accessories... A true manufacturer

Formed in 1985, Climatech has rapidly positioned itself as the leading European manufacturer of flexible duct connectors, insulation fastening systems and other duct accessories.

Set up by François Gohy, Climatech is still a family owned and managed company. Climatech is truly at the heart of Europe and exports more than 97% of its production to over 75 countries.

Climatech enjoys a reputation for excellence thanks to its :

Own design and testing facilities

Continuous investment in production machinery and facilities

Customer satisfaction orientated strategy

Extensive range of duct and fixing accessories

Worldwide customer base resulting in great versatility

Its registered trade mark «**Clim**®» enables all Engineers, Consultants, Contractors and End Users, wherever in the world, to be sure that they are selecting only Climatech products... **the best international choice for duct and fixing accessories**



Climatech International sa/nv
Belgium

T. +32 2 654 12 40
F. +32 2 654 12 56
clim@climatech.be
www.climatech.be