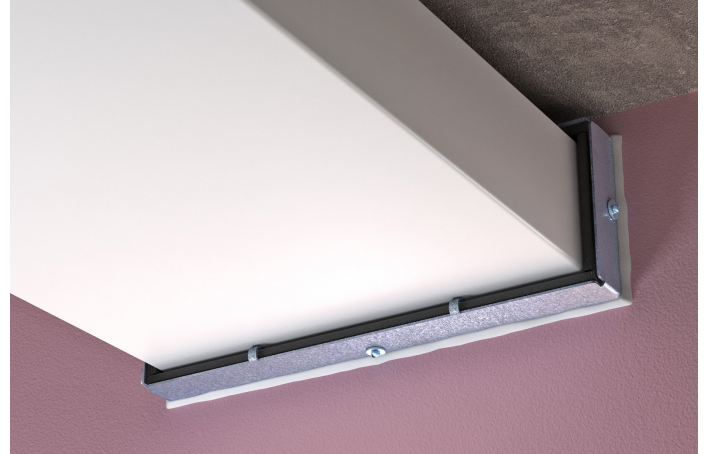


QRS CE MARKED INTUMESCENT SLIM FIRE SLEEVES

QRS CE Marked Intumescent Slim Fire Sleeves prevent the spread of fire where plastic pipes penetrate fire compartment walls. They are specifically designed to be slim for applications where there is limited space around the duct.



QRS CE Marked Intumescent Slim Fire Sleeve



QRS CE Marked Intumescent Slim Fire Sleeve installed in plasterboard partition

FEATURES & BENEFITS

- ❏ CE Marked
- ❏ Tested to BSEN 1366-3: 2009 and classified according to EN 13501-2: 2007 + A1: 2009
- ❏ Tested with Uncapped/Uncapped (U/U) duct configurations as required for ventilation ducts
- ❏ Up to 2 hour fire rating
- ❏ Very slim-line (saves ceiling space)
- ❏ Suitable for masonry walls or plasterboard partitions
- ❏ Suitable for insulated and non-insulated partitions
- ❏ Can be retrofitted
- ❏ No mechanical fixings required
- ❏ Robust galvanised steel shell
- ❏ Performance unaffected by weathering (Type X Durability)

REGULATIONS

Building Regulations impose limitations on all pipes passing through fire compartment walls and floors. QRS CE Marked Intumescent Slim Fire Sleeves allow plastic ducts to meet the requirements of the Building Regulations. QRS Slim Fire Sleeves have been tested according to BS EN 1366-3: 2009 where various plastic duct sizes have met insulation and integrity criteria for this standard for up to 2 hours.

COMPOSITION

The QRS CE Marked Intumescent Slim Fire Sleeves consist of a flexible galvanised steel shell containing graphite based intumescent material.

They are manufactured to suit flat ducts of 110x54mm, 205x60mm, and 220x90mm.

QRS CE MARKED INTUMESCENT SLIM FIRE SLEEVES

DURABILITY

Tested to Type X durability which means the QRS CE Marked Intumescent Slim Fire Sleeves can be installed in conditions exposed to weathering. QRS Slim Fire Sleeves are expected to last the lifetime of the building.

TECHNICAL SUPPORT & GUIDANCE

Should you require any further information regarding this product, please don't hesitate to contact Quelfire Ltd.

PERFORMANCE

Product Code	Duct Size (mm)	Space needed around duct to fit QRS Slim Fire Sleeve (mm)	Recommended approx. aperture (mm)	QRS length (mm)	Fire Rating
QRS110/54SS	110 x 54	5	122 x 66	140	120 minutes
QRS204/60SS	204 x 60	5	216 x 72	140	90 minutes
QRS220/90SS	220 x 90	9	241 x 112	140	60 minutes

WARRANTY The Company warrants its products to be free from defects in material and workmanship for a period of 12 months from the date of delivery. The Company's obligation under this warranty is limited, as its option, to the repair or replacement, free of charge, or refund of the net Invoiced price of any part found to be defective, and which, in the Company's opinion, has not been subject to undue wear and tear, accident, alteration, abuse or misuse. Consequent damages are expressly disclaimed. Technical advice from Quelfire whether verbal, in writing or by way of trials, is given in good faith but without warranty. The application, use and installation of the Company's products are beyond the control of the Company, and the purchaser is solely responsible that goods are fit for any particular purpose. In line with the Company's policy of continual research and development, product specifications and availability are subject to change or withdrawal without prior notice.

Quelfire maintain a policy of constant improvement and reserve the right to alter or amend the specifications of their products without notice. Quelfire is a Registered Trademark.