

# QRS CE MARKED INTUMESCENT FIRE SLEEVES

**QRS CE Marked Intumescent Fire Sleeves** prevent the spread of fire where plastic pipes or plastic ducts penetrate fire compartment walls.



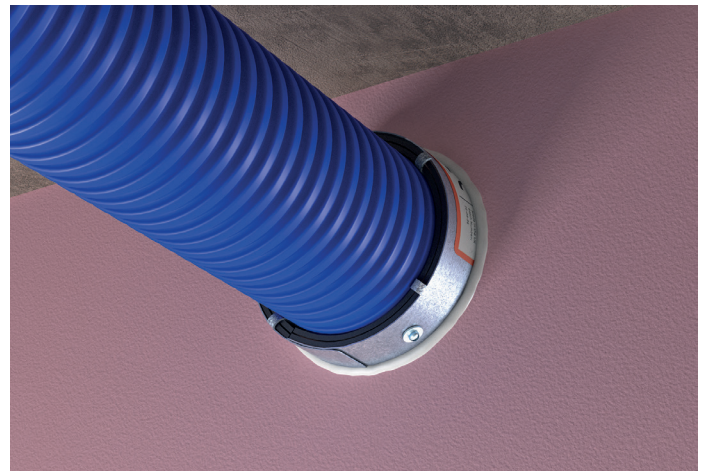
QRS CE Marked Intumescent Fire Sleeve - rectangular



QRS CE Marked Intumescent Fire Sleeve installed in plasterboard partition

## FEATURES & BENEFITS

- ❏ CE Marked
- ❏ Tested to BSEN 1366-3: 2009 and classified according to EN 13501-2: 2007 + A1: 2009
- ❏ Tested with Uncapped / Uncapped (U/U) duct configurations as required for ventilation ducts
- ❏ Up to 2 hour fire rating
- ❏ Suitable for masonry walls or plasterboard partitions
- ❏ Suitable for insulated and non-insulated partitions
- ❏ Suitable for use in QuelStop Fire Batt
- ❏ Can be retrofitted
- ❏ No mechanical fixings required
- ❏ Robust galvanised steel shell
- ❏ Performance unaffected by weathering (Type X Durability)



QRS CE Marked Intumescent Fire Sleeve (circular) installed around semi-rigid duct in plasterboard partition

## COMPOSITION

QRS CE Marked Intumescent Fire Sleeves consist of a flexible galvanised steel shell containing graphite based intumescent material.

They are manufactured to suit flat ducts of 110x54mm, 205x60mm, and 220x90mm. And round ducts with 75mm, 100mm and 125mm overall diameter.

## REGULATIONS

Building Regulations impose limitations on all pipes passing through fire compartment walls and floors. QRS CE Marked Intumescent Fire Sleeves allow plastic ducts to meet the requirements of the Building Regulations. QRS Fire Sleeves have been tested according to BSEN 1366-3: 2009 where various plastic duct sizes have met insulation and integrity criteria for this standard for up to 2 hours.

## DURABILITY

Tested to Type X durability which means the QRS CE Marked Intumescent Fire Sleeves can be installed in conditions exposed to weathering. QRS Fire Sleeves are expected to last the lifetime of the building.

## TECHNICAL SUPPORT & GUIDANCE

Should you require any further information regarding this product, please don't hesitate to contact Quelfire Ltd.

## PERFORMANCE

Product Code	Duct Size (mm)	Space needed around duct to fit QRS Fire Sleeve (mm)	Recommended approx. aperture (mm)	QRS length (mm)	Fire Rating
QRS110/54	110 x 54	11	132 x 76	180	120 minutes
QRS205/60	205 x 60	12	229 x 84	180	120 minutes
QRS220/90	220 x 90	19	258 x 128	140	120 minutes
QRS75	75 Ø semi-rigid	10	87 Ø	140	120 minutes
QRS110*	100 Ø	16	132 Ø	180	120 minutes
QRS130*	125 Ø	22	170 Ø	180	90 minutes

\*QRS130 and QRS110 are not currently CE Marked

## APPLICATION / INSTALLATION

The QRS CE Marked Intumescent Fire Sleeve should be placed around the ventilation duct, positioned centrally within the partition and should be flush or protrude from each face of the wall. The plasterboard should be cut to a tight fit around the QRS Fire Sleeve, and any gaps should be sealed with the QuelStop CE Marked Intumescent Acoustic Acrylic Sealant.

The QRS Fire Sleeve can also be installed within the QuelStop Fire Batt.



QRS CE Marked Intumescent Fire Sleeve - circular



QRS CE Marked Intumescent Fire Sleeve - rectangular (open)

**WARRANTY** The Company warrants its products to be free from defects in material and workmanship for a period of 12 months from the date of delivery. The Company's obligation under this warranty is limited, as its option, to the repair or replacement, free of charge, or refund of the net Invoiced price of any part found to be defective, and which, in the Company's opinion, has not been subject to undue wear and tear, accident, alteration, abuse or misuse. Consequent damages are expressly disclaimed. Technical advice from Quelfire whether verbal, in writing or by way of trials, is given in good faith but without warranty. The application, use and installation of the Company's products are beyond the control of the Company, and the purchaser is solely responsible that goods are fit for any particular purpose. In line with the Company's policy of continual research and development, product specifications and availability are subject to change or withdrawal without prior notice.

Quelfire maintain a policy of constant improvement and reserve the right to alter or amend the specifications of their products without notice. Quelfire is a Registered Trademark.