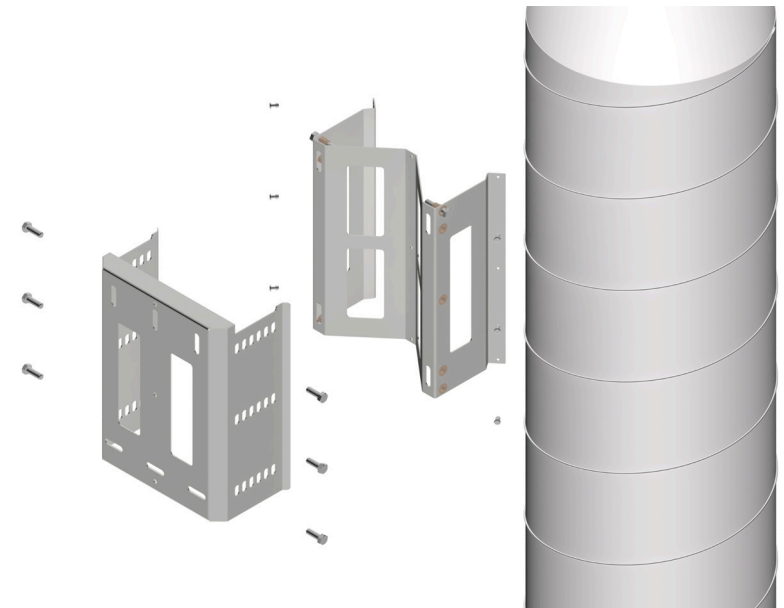


250mm TO 630mm DIAMETER DUCT MOUNTING SYSTEM

Available in eight different diameters the Limpet duct mount system dramatically reduces installation time for vertical ductwork, and provides the confidence of a fully tested adjustable suspension system.

- Fits directly onto spiral and rolled ductwork.
- Standardised vertical duct installations.
- Adjustable distance to wall will accommodate half D radius bend.
- Fully galvanised for longevity.
- Patent No: 2 462 582



DIMENSIONAL DATA mm

CODE	DUCT	A	B	C	D	E	F	MASS	RATED LOAD	SPIRAL TUBE MASS
IP07-LDMC-0250	250	178	250	193	236	182	116	2.3 Kg	100 Kg	4.2 Kg per metre
IP07-LDMC-0315	315	223	315	243	298	230	148	3.8 Kg	150 Kg	5.3 Kg per metre
IP07-LDMC-0355	355	252	355	275	336	260	166	4.8 Kg	150 Kg	8.1 Kg per metre
IP07-LDMC-0400	400	284	400	317	379	294	188	6.1 Kg	200 Kg	9.2 Kg per metre
IP07-LDMC-0450	450	319	450	357	426	332	210	7.7 Kg	200 Kg	10.2 Kg per metre
IP07-LDMC-0500	500	357	500	400	474	366	235	13.4 Kg	250 Kg	11.3 Kg per metre
IP07-LDMC-0560	560	403	560	447	530	410	262	16.9 Kg	250 Kg	12.6 Kg per metre
IP07-LDMC-0630	630	460	630	505	596	460	296	21.7 Kg	250 Kg	14.2 Kg per metre

Please refer to product installation sheets supplied with the product for more detailed instructions. The brackets have a rated load safety factor of 300%.

INSTALLATION

Step 1. Attach the W section part (A) to the spiral duct using the 9 off 5.0mm structural rivets (C) provided. Use a 5.0mm drill bit and drill through holes.

Step 2. Attach the U channel (B) to the facade to which the duct is to be fixed. Use the recommended fixings in the table below or equivalents.

Step 3. Locate the duct and W bracket (A) assembly onto the U channel (B) (bolts forming a weight taking stay are pre-installed). Align the slots in the U channel (B) with the desired distance to facade and install the six set screws (D).

FACADE TYPE	RECOMENDED FIXING
Brickwork	250 - 450 Dia 6 off Fischer 044965 500 - 630 Dia 6 off Fischer 044966
Blockwork	250 - 450 Dia 6 off Fischer 503135 500 - 630 Dia 6 off Fischer 044886
Concrete	250 - 450 Dia 6 off Fischer 060718 500 - 630 Dia 6 off Fischer 060721
Steelwork	250 - 450 Dia 6 off M10 Nuts & Bolts 500 - 630 Dia 6 off M12 Nuts & Bolts
Timber Beam	6 off M12 x 150mm Coachscrews

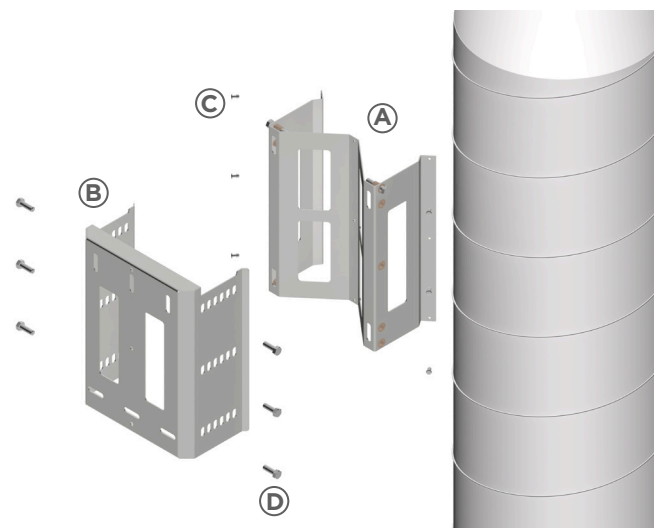
MATERIAL & FINISH

All components are manufactured from mill finish hot dip galvanised mild steel conforming to EN10327 (BS2989). Structural rivets and set screws are mild steel with bright zinc electro plating. Recommended for use in systems with pressure up to 2000 Pascals positive and negative. The system is suitable for temperatures from -20° to +120° C.

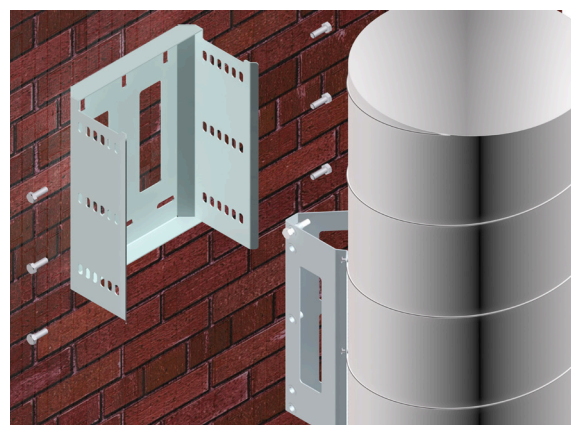
The LIMPET Duct Mount is suitable for internal & external installation, and is suitable for use on single and twin skin flue and duct systems. The above specification refers to our standard stock range. We can also supply custom made LIMPET Duct Mounts with alternative finishes such as powder coating. Stainless Steel versions can be provided. Please contact us for further information and advice.

MAINTENANCE

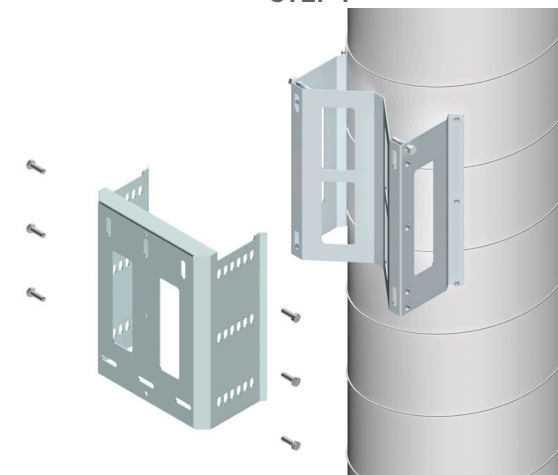
Limpet Duct Mounts are of a passive nature and as such require no routine maintenance or lubrication. Should the product require routine cleaning we recommend low-pressure air blasting, vacuuming or wiping the exposed surfaces with a damp cloth. It is not unusual for "White Zinc Oxide" to develop on galvanised components when the zinc in the galvanising reacts electrolytically with moisture.



STEP 2



STEP 1



STEP 3

